

gasprofi 1^{SCS} *micro*



*Safety Laboratory
Gas Burner*



The smallest professional among the laboratory gas burners!

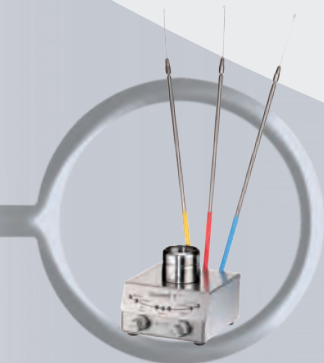
The Gasprofi 1 SCS micro - Series.



Button function



DoubleClick
IR-Sensor



Holding device for
inoculation loop holders



Burner shaft can be opened
at the flick of a wrist for
cleaning purposes



Removable & decomposable
burner head, autoclavable,
completely made of
stainless steel and ceramics



Gasprofi 1 SCS micro - Series: Safety and comfort in the smallest possible space. Optimal for all flame-related applications in the laboratory.

Simply safe to operate

Depending on the model, the Gasprofi 1 SCS micro - Series can be operated with touch free IR-Sensor, button function or foot pedal. With the DualKnob for adjusting gas and air flow, the flame can be precisely regulated.

More room to work

The Gasprofi 1 SCS micro - Series is extremely space-saving. This allows nearly effortless work as a result of its extraordinarily low working height.

Outstanding safety

The Safety Control System SCS® demonstrates state-of-the-art safety technology which constantly analyzes potential hazards and, if necessary, initiates safety measures, such as an interruption of the gas supply.

Robust

All external components are made of stainless steel; this guarantees the greatest possible working sterility. The **removable burner head can simply be dismantled into its individual components for in-depth cleaning.**

Clogging is no longer a problem. Spilled liquids flow out through an integrated drain, and solid substances can be easily removed by opening the burner shaft.

Universal

The Gasprofi 1 SCS micro - Series can be operated with stationary natural gas and propane / butane gas supplies, cartridge gas or gas cylinders.

Environment-conscious

Excellent energy efficiency in accordance with the most recent standards reduces gas and power consumption. This increases the burning time when gas cartridges are used.

Gasprofi 1 SCS micro - Series: Ideal for use in cleanroom workbenches and laboratories

gasprofi 1^{SCS} *micro* school edition

For optimal safety in modern schools

Bunsen burners were standard equipment in schools for many years but they were the cause of many accidents and fires.

Gasprofi 1 SCS micro school edition changes all this!

A safe gas burner for sterilizing, heating and other flame related applications.

Excellent safety due to the Safety Control System SCS®

The flame is re-ignited automatically if it goes out inadvertently. For example, if the flame is extinguished due to over-boiling of liquids and cannot be re-ignited, the burner automatically shuts the gas supply off for safety.

Easy operation

Switch flame on and off at the touch of a button. Optionally, the Gasprofi 1 SCS micro school edition can also be operated by a foot pedal* or an external DoubleClick IR-Sensor*.

* optional



	gasprofi 1 ^{SCS} micro school edition	gasprofi 1 ^{SCS} micro
Programs		
Button function	✓	✓
Pedal Standard	✓	✓
Pedal Start-Stop		✓
Sensor Auto-Off & Start-Stop		✓
Safety Control System SCS®	✓	✓
Residual heat display		✓
Burner Head Control BHC		✓
Foot pedal included		✓
DoubleClick IR-Sensor		✓
Gas inlet filter	✓	✓
Removable & decomposable burner head	✓	✓
Housing, burner head, gas connection & controls made of stainless steel	✓	✓
DVGW approved	✓	✓



gasprofi 1^{SCS} *micro*

Multi-Use

The Gasprofi 1 SCS micro can be operated with touch free IR-Sensor, button function or foot pedal. For all options, different programs exist that have been developed from practical experience: flexible start-stop functions, continuous application for up to 60 minutes or programs for short flame sterilization – exact to the second.

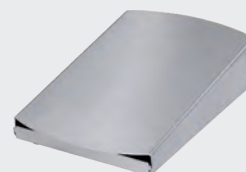
Innovative - The DoubleClick IR-Sensor

This safety function ensures that the burner can only be ignited by activating the DoubleClick IR-Sensor twice. As a result, unintentional ignition or ignition due to dropping or falling objects is virtually impossible, increasing safety considerably.

Top-off-the-Line safety

In addition to the ignition and flame control function and the overheating protection, the Safety Control System SCS® also features continuous burner head control (BHC). BHC unfailingly detects burner head clogging by liquids or solid substances and ensures the correct assembly of the burner head.

Exceptional passive safety features: After prolonged use, the residual heat display will signal that the burner head is still hot in order to protect the user from burns.



The range of delivery:

gasprofi 1^{SCS} school edition micro

Art.-No. 6.007.000

with button function
2 standard programs for button (function knob)
and foot pedal
Safety Control System (SCS)
Stainless steel foot pedal optional: **Art.-No. 6.000.402**

gasprofi 1^{SCS} micro

Art.-No. 6.004.000

with DoubleClick IR-Sensor, button function
and stainless steel foot pedal
5 standard programs for IR-Sensor,
button (function knob) and foot pedal
Adjustable IR-Sensor reaction distance
Safety Control System (SCS)
with Burner Head Control (BHC) and residual heat display
Holding device for 3 inoculation loop holders

Range of delivery for both models:

Removable and decomposable burner head
Tilt mechanism, right / left
Nozzles for natural gas, propane / butane gas
Turbo flame
Wrench 17 mm for gas connection
Screwdriver for burner head and cover of burner shaft
Tubing connector with swivel nut
Switching power supply (global, level 6)
Instruction manual and 2-year warranty



made
in
Germany



Technical Data:

Programs

Button: Start-Stop with timer, 60 min
Foot pedal: Standard (flame during pressed foot pedal)
Start-Stop with timer, 60 min¹
Start-Stop with timer, 60 min
Auto-Off with learn function, 1 sec - 60 min

Safety features

Safety Control System (SCS)
with gas safety cut off:

ignition and flame control
temperature monitor
automatic unit switch off, 10 min / 4 h
burner head clogging
and assembly monitor
indicates a hot burner head

Burner Head Control (BHC)¹:

Residual heat display¹:

Gas supply and consumption

Gas connection:

Gas types:

1/4" left with gas filter
natural gas E/LL, 18 - 25 mbar,
liquid gas, 47,5 - 57,5 mbar, I₂ELL3B/P
95 l/h natural gas (LL), 70 g/h liquid gas
Campingaz: CV 360 - 40 min, C 206 - 170 min,
CV 300 - 200 min, CP 250 - 210 min,
CV 470 - 370 min, CG 1750 - 150 min
Guilbert: Express 444 / 445 - 50 min
Coleman: C 250 - 160 min, C 500 - 320 min

Temperatures

Flame temperature: 1350 °C on liquid gas
1300 °C on natural gas (E)
Temperature threshold level: 1.0 kW liquid gas, 1.0 kW natural gas

Electrical

Power consumption: 2 VA (Stand-by max 0.1 VA)
Switching power supply: 100-240V / 50/60Hz / max. 0.3A; 9V DC / 1.3 A
Level 6 (Stand-by Verbrauch max. 0.1 W)
IR-Sensor coverage¹: 35 - 70 mm, adjustable
DoubleClick IR-Sensor¹: time range 1 sec

Mechanical

Casing and operating controls: stainless steel / glass, UV and solvent resistant,
flame-sterilizable
removable and decomposable, stainless steel
Burner head: Ø 23 mm, with drains
Cover of burner shaft: 85 x 49 x 86 mm
Measurements (w x h x d): 700 g
Weight:

Licenses

DIN-DVGW Reg.-No.: NG-2211AS0167
CE: EN 61326-1, EN 61010-1, EN61010-2-010
EU guidelines: 2014/30/EU, 2014/35/EU & 2011/65/EU

¹ only Gasprofi 1 SCS micro



Windshield

made of stainless steel, for a stable
flame under conditions of strong air flow
Art.-No. 8.000.600



Safety adapter

with integrated pressure regulator
for gas cartridges **CV 360**
Art.-No. 8.000.700
for gas cartridges **Express 444**
Art.-No. 6.000.750



Autoloop Pro

The fully automatic carousel for flame
sterilizing inoculation loops
Art.-No. 6.000.400

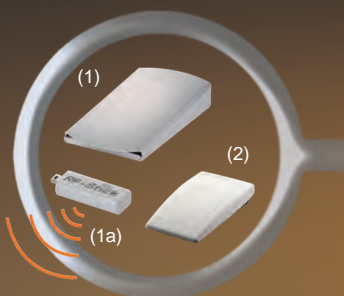


External DoubleClick IR-Sensor
touch-free flame activation, made of
stainless steel, cable length 0.4 m
Art.-No. 6.000.406



Spray protector

for more safety when handling with
pathogenic material
Art.-No. 6.000.200



(1) Foot pedal

made of stainless steel, cable length 3.0 m
Art.-No. 6.000.402

(1+1a) Foot pedal radio set RF Stick
(available in EU countries only)
Art.-No. 8.000.404-RF

(2) Foot pedal Mini

made of plastic, cable length 3.0 m
Art.-No. 6.000.403



Burner head

double length for better
heating of Erlenmeyer flasks,
decomposable and autoclavable
Art.-No. 8.100.091

Additional accessories available
(see accessory brochure)

WLD-TEC GmbH



ENRICO BRUNO s.r.l.
APPARECCHI SCIENTIFICI
SANITARI - INDUSTRIALI

www.enrico-bruno.it